

Eco-Takeouts[®]

Reusable Containers

Sustainability & Profitability in One Turnkey Program



**Designed
To Serve**

Eco-Takeouts divert tons of waste from landfills, saving you a significant amount of money while providing a much improved dining experience over flimsy disposables.

With this simple turnkey program, you have every reason to feel good about doing good, and your guests will love it, too.

The Challenge

Recent increases in meals to-go have resulted in an explosion of single-use packaging.

They're bad for the environment, a black hole for your budget and create a big mess for diners with their weak, leaky construction.



Using disposables is like
throwing money away.



The Solution

The constantly growing number of operators who have embraced the simple Eco-Takeouts program benefit from:

- Sustainability halo
- Significant spending and waste reduction
- Rapid break-even after rollout
- Improved guest perception and dining experiences



One Eco-Takeouts container replaces 1,000 disposable containers.

1 Eco Container = **1,000** Disposables



\$5



\$250



The resulting savings are substantial, and the higher the volume you serve, the more you'll save.

A Case Study

Eco-Takeouts purchased at an average price of \$5/ea

A 3:1 ratio of 3 Eco-Takeouts per person served (for best in-service life)

An average cost of \$0.25 per disposable container

365 days of service

Scenario 1

Service for 1,000:

Eco-Takeouts investment **\$15,000**

Disposables investment **\$91,250**

Total savings **\$76,250**

Scenario 2

Service for 10,000:

Eco-Takeouts investment **\$150,000**

Disposables investment **\$912,500**

Total savings **\$762,500**



How it Works

Convenient Perks

A better dining experience compared to flimsy disposable containers

Fewer order mistakes thanks to transparent containers

Easy stacking

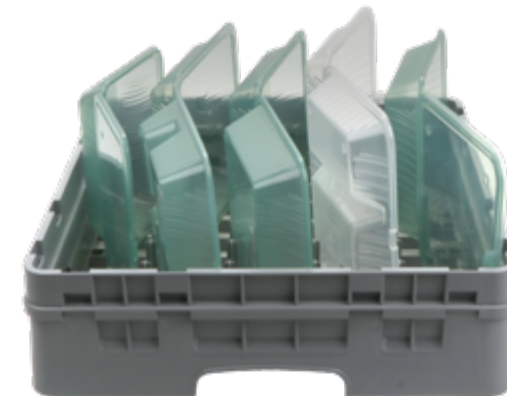
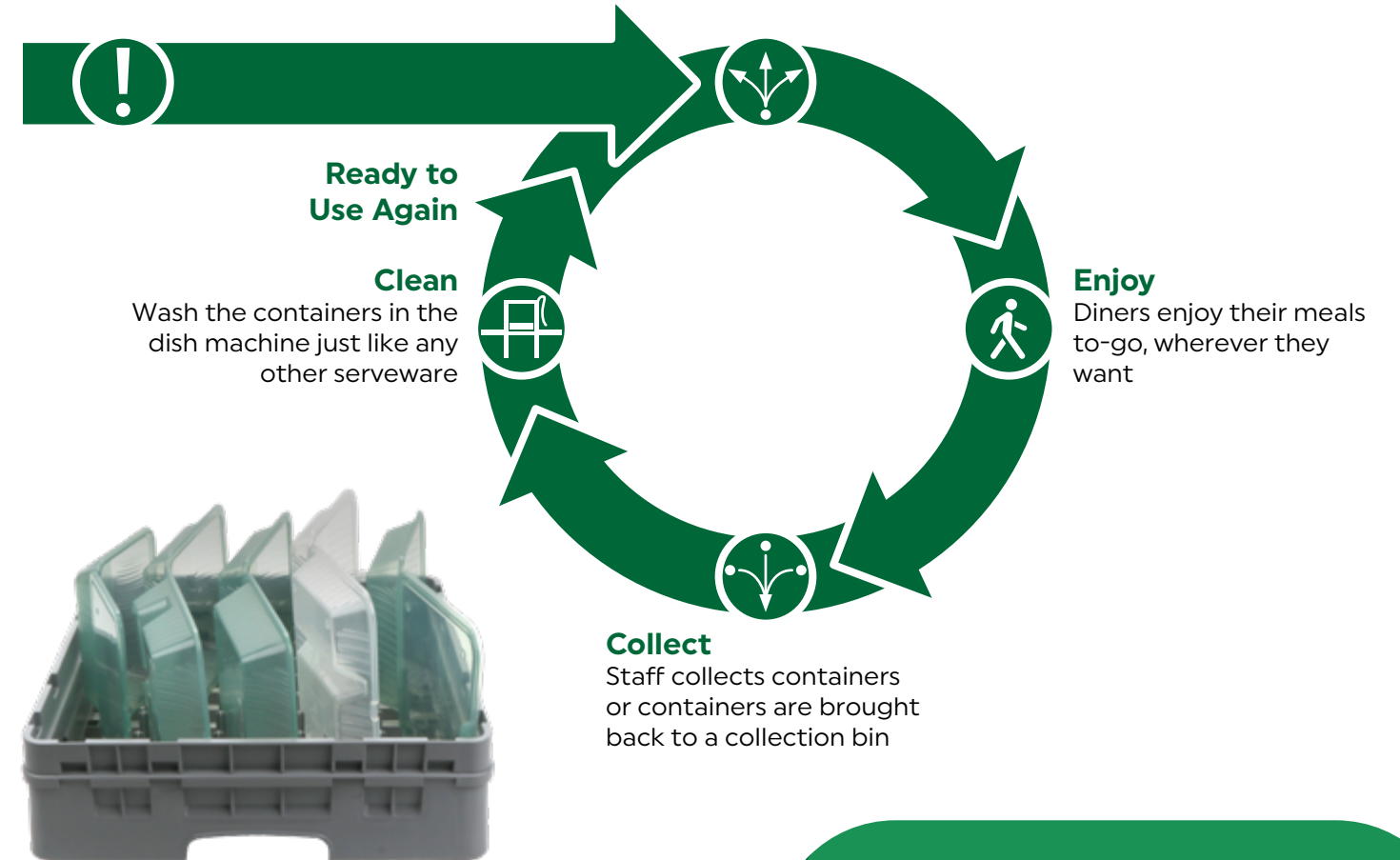
Microwavable for reheating food in one-minute pulses

Introduce

Launch the new Eco-Takeouts program

Implement

Use Eco-Takeouts containers as you would any disposable



Washing

High or low temp dishwasher safe

Lasts over 1,000 wash cycles

Angle opened containers at 160° in a peg dish rack for thorough sanitation

"It takes 17 uses to break even for expense versus paper pulp to-go box."

— Janet S., B&I Dining in Minneapolis



Recyclable

When you're ready to dispose of your Eco-Takeouts for good, simply place them in the recyclable bin, the last part of the sustainability cycle.

The Eco-Takeouts Suite

New Products

Count on Eco-Takeouts's industry-leading product innovation to accommodate all your menu items.

Nowhere else can you find reusable to-go options for:

- The widest variety of bowls, boxes and available, plus a reusable tumbler
- A single pizza slice
- A whole 10"-12" pizza box
- An open-face boat for wings, fries, etc.,
- A more simple option for returning containers, among so many other great options

And that only covers a portion of recent product development!



Luxury Black Edition

The only focused collection of reusable to-go containers with an upmarket classic black look, made even better by its sustainability halo.



Soup Containers

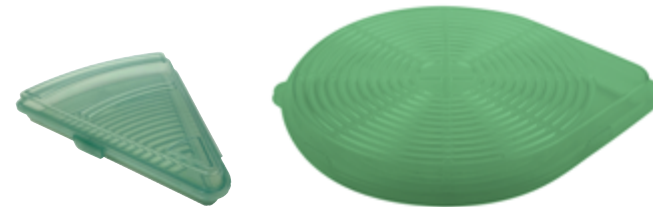
Meals in a bowl, whether hearty comfort food or healthy fare, are everywhere. With Eco-Takeouts' variety of sizes for soup containers, you can serve anything from pho or ramen to a small side of scratch-made chili in these leak-proof containers.



Reusable Pizza Boxes

New to the market, you now have two options for pizza to-go: a single slice and a whole 10"-12" pizza.

Now you have another choice for on-the-go pie than costly, wasteful cardboard – and you can't find it anywhere but right here.



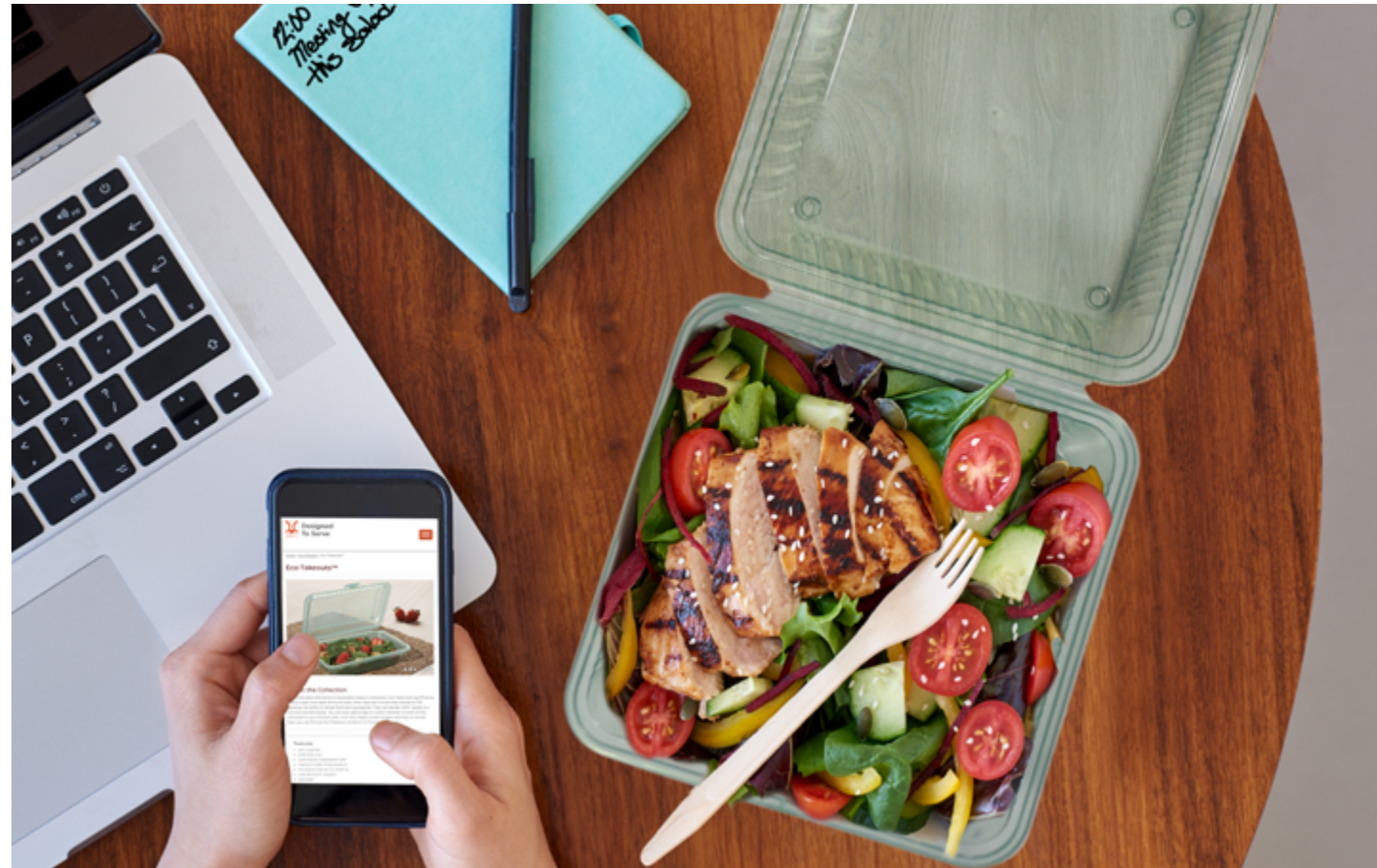
Transport

Transport with ease and the confidence of excellent temperature control with these smart products from our sister company, Winco. They are ideal for keeping food hot for home delivery programs.



Why You AND Your Guests Will Love Eco-Takeouts

Eco-Takeouts offer an improved guest experience over flimsy polystyrene and paper products. They are attractive containers and plenty sturdy, giving guests a much better dining experience.



But the good news doesn't stop there:

- Keeps hot food hot significantly longer than polystyrene, especially helpful for high-volume service
- The most comprehensive line of reusable to-go containers on the market with constant new product development
- Fewer order mistakes thanks to transparent containers
- Easy stacking
- Microwavable for reheating food in one-minute pulses
- Recyclable #5 plastic

Who Should Implement an Eco-Takeouts Program?

Most operations can take advantage of the cost and waste savings that come with an Eco-Takeouts program.



Colleges & Universities

Students and faculty love Eco-Takeouts for convenient food to-go from the dining hall and other concepts around campus.



Business & Industry Campuses

Employees enjoy the flexibility of picking up to-go food from corporate dining facilities to accommodate their busy schedules.



Hospitals

Health care facilities use Eco-Takeouts to provide convenient food to-go for their medical staff, visitors and other hotel employees.



Senior Living

Elder care facilities embrace these reusables as a means to quickly distribute meals to room-bound residents while maintaining heat and creating meaningful cost and waste reduction.



Individual Restaurants

As more guests demand sustainable packaging, a growing number of individual restaurants and local chains have opted for Eco-Takeouts to their customers' delight!



Restaurant & Delivery Collectives

Small groups of restaurants who share a common area choose to reuse instead of adding to landfills.

Sustainably-minded delivery collectives serving a group of restaurants are also an excellent option for Eco-Takeouts, and a great way for eco-friendly restaurants to be discovered by new patrons.



Grab-and-Go

Quick meals and snacks are as on-trend as sustainable packaging, making grab-and-go cases the perfect environment for Eco-Takeouts in campus dining, restaurant checkout areas, hospital and senior living cafés and so on.



Hotels & Resorts

Hospitality operations lean on reusables for employee dining and to provide guests with portable lunches and snacks when they go on excursions.

How to Best Implement Eco-Takeouts

Turnkey Program

By far the most simple, cost-effective program on the market, you have two options for how you implement the program: the Accountability Model and the Honor System.

Accountability Model

Holding guests accountable is the most popular option, and it's so easy:

- Give guests the option to choose a reusable container for a small upcharge
- Provide a timeframe for when the container should be returned; 1-4 weeks is most common
- Guest returns container to the operation or to the convenient Eco Drop Bin
- If the return timeframe isn't met, you keep the upcharge

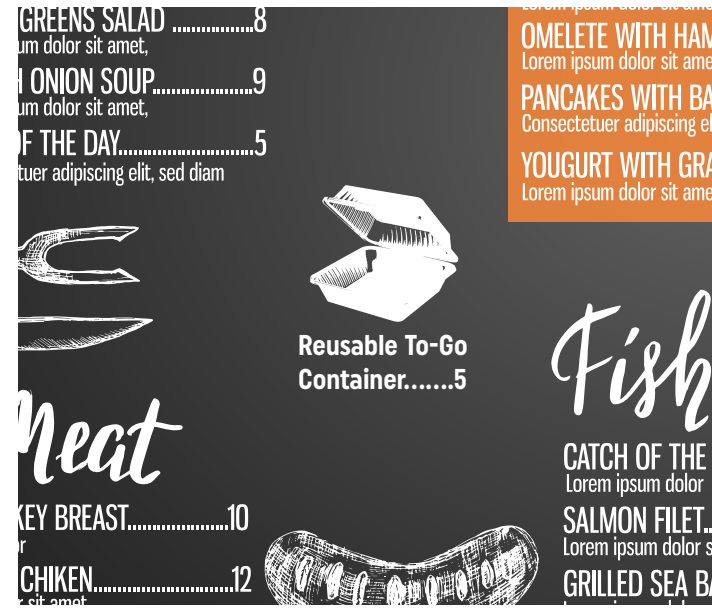
It's like checking out a book from the library. Guests understand it immediately. This method also helps operators recoup costs from kept containers.

The Honor System

This is similar to the Accountability Model, just without the upcharge for the container.

- Provide the container to guests
- Request they return it within a specified time
- Collect returned containers in the convenient Eco Drop Bin

Regardless of which option you use, you can expect to replace about 10%-20% of your containers annually. Our cost calculator will even show you what that will look like for your first three years of use!



Guests who choose a reusable over a single-use option are already bought into the sustainability efforts and therefore highly likely to return.

In other closed-loop systems like campus dining halls, senior living and employee dining, returned containers are easy to come by because diners return almost daily.



Custom Logos & Colors

Every container in the Eco-Takeouts collection can be customized with your own logo or brand/school colors.

You can also add a "Take > Fill > Return" design to remind guests of their part in the program.

Customization is an extremely popular option for Eco-Takeouts.

- Add your logo or custom artwork to Eco-Takeouts containers for increased branding
- Customized color for the body of your Eco-Takeouts containers
- G.E.T. produces custom logo-ing in-house in Houston by professionally trained staff with the fastest turnaround times in the industry
- Low MOQs: customize as few as 12 dz
- Digital proofs available within 24 hours on business days
- Also available are custom colors on the body of Eco-Takeouts containers and multi-color logos, which are produced overseas at a slightly longer turnaround rate
- Contact your sales rep for custom printing rates

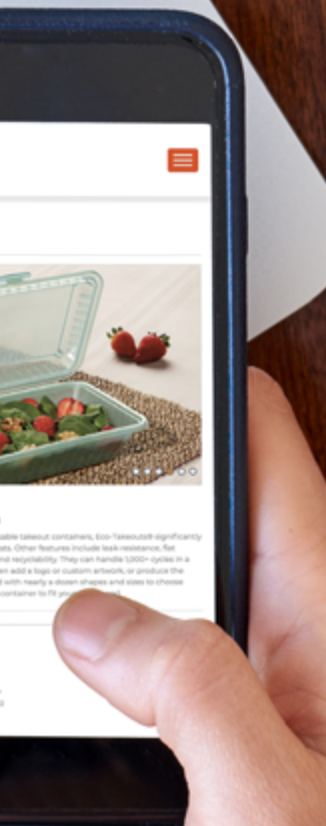


"G.E.T.'s reusable takeout containers are amazing. They go right in the dishwasher and stand up to many hundreds of uses – and they still look great! We use them at dozens of restaurants, for every kind of cuisine. They're simply the best."

— Adam F., CEO DeliverZero

deliverzero

Eco-Takeouts®



EC-09-1-JA
3-Compartment
9" x 9", 3.5" tall
22.9 cm x 22.9 cm, 8.9 cm
1 dz.



EC-10-1-JA
Single Entrée
9" x 9", 3.5" tall
22.9 cm x 22.9 cm, 8.9 cm
1 dz.



EC-11-1-JA
Half Size
9" x 6.5" x 2.75"
22.9 cm x 16.5 cm x 7 cm
1 dz.



EC-12-1-JA
3-Compartment
9" x 9", 2.5" tall
22.9 cm x 22.9 cm, 6.4 cm
1 dz.



EC-15-2-JA
2-Compartment
10" x 8", 3" tall
25.4 cm x 20.3 cm, 7.6 cm
1 dz.



EC-16-JA
3-Compartment
9" x 9", 2" tall
22.9 cm x 22.9 cm, 5.1 cm
1 dz.



EC-17-JA
Single Entrée
9" x 9", 2" tall
22.9 cm x 22.9 cm, 5.1 cm
1 dz.



EC-18-JA
Half Size
9" x 6.5" x 2"
22.9 cm x 16.5 cm x 5.1 cm
1 dz.



EC-19-JA
Half Size
8" x 5.5", 2.75" tall
20 cm x 14 cm, 7 cm
1 dz.



EC-08-1-JA
Single Entrée
5" x 5" x 3.25"
12.7 cm x 12.7 cm x 8.3 cm
2 dz.



EC-22-JA
Rectangular Food Tray
10" x 5.5", 1.75" tall
25.4 cm x 14 cm x 4.5 cm
2 dz.



EC-25-1-JA
Single Pizza Slice
Fits slice from 16" pie
10.5" x 8.25" x 0.75"
26.7 cm x 21 cm x 1.9 cm
2 dz.



EC-07-1-JA
Soup Container
12 oz. (12 oz. rim-full),
4.25" dia., 2.75" tall
355 ml (355 ml), 10.8 cm
1 dz.



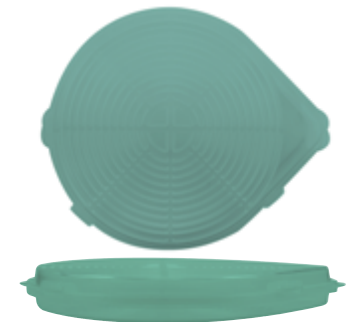
EC-13-1-JA
Soup Container
16 oz. (16 oz. rim-full),
4.25" dia., 3.75" tall
473 ml (473 ml), 10.8 cm
1 dz.



EC-07-LID-JA
Replacement Lid for
EC-07-1 and EC-13-1
1 dz.



EC-07-HAN-JA
Replacement Handle for
EC-07-1 and EC-13-1
1 dz.



EC-27-1-JA
Whole 10"-12" Pizza
14.2" L x 14" W x 2.2" H
2 dz.
*Available Oct 2021



EC-20-JA
Side Dish
6 oz. (6.75 oz rim full),
3.25" dia., 3" tall
2 dz.



EC-21-JA
Side Dish
12 oz (14 oz rim full)
4.25" dia., 3" tall
2 dz.



EC-23-1-JA
Soup Container
12 oz (14 oz rim full)
4.4" dia., 2.3" tall
1 dz.



EC-24-1-JA
Soup Container
16 oz (18 oz rim-full)
4.4" dia., 2.9" tall
1 dz.



EC-26-1-JA
Soup Container
32 oz. (41 oz. rim-full),
6.5" dia., 3.25" tall
2 dz.

Eco-Takeouts[®]



EC-10-1-CL
Single Entrée
9" x 9", 3.5" tall
22.9 cm x 22.9 cm, 8.9 cm
1 dz.



EC-11-1-CL
Half Size
9" x 6.5" x 2.75"
22.9 cm x 16.5 cm x 7 cm
1 dz.



EC-19-CL
Half Size
8" x 5.5", 2.75" tall
20 cm x 14 cm, 7 cm
1 dz.



EC-08-1-CL
Single Entrée
5" x 5" x 3.25"
12.7 cm x 12.7 cm x 8.3 cm
2 dz.



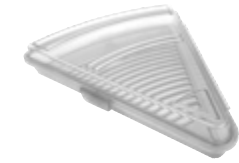
EC-09-1-CL
3-Compartment
9" x 9", 3.5" tall
22.9 cm x 22.9 cm, 8.9 cm
1 dz.



EC-12-1-CL
3-Compartment
9" x 9", 2.75" tall
22.9 cm x 22.9 cm, 6.4 cm
1 dz.



EC-15-2-CL
2-Compartment
10" x 8", 3" tall
25.4 cm x 20.3 cm, 7.6 cm
1 dz.



EC-25-1-CL
Single Pizza Slice
Fits slice from 16" pie
10.5" x 8.25" x 0.75"
26.7 cm x 21 cm x 1.9 cm
2 dz.



EC-07-1-CL
Soup Container
12 oz. (12 oz. rim-full),
4.25" dia., 2.75" tall
355 ml (355 ml), 10.8 cm
1 dz.



EC-13-1-CL
Soup Container
16 oz. (16 oz. rim-full),
4.25" dia., 3.75" tall
473 ml (473 ml), 10.8 cm
1 dz.



EC-07-LID-CL
Replacement Lid for
EC-07-1 and EC-13-1
1 dz.



EC-07-HAN-CL
Replacement Handle for
EC-07-1 and EC-13-1
1 dz.



EC-27-1-CL
Whole 10"-12" Pizza
14.2" L x 14" W x 2.2" H
2 dz
*Available Oct 2021



EC-20-CL
Side Dish
6 oz (6.75 oz rim full),
3.25" dia., 3" tall
2 dz.



EC-21-CL
Side Dish
12 oz (14 oz rim full)
4.25" dia., 3" tall
2 dz.



EC-23-1-CL
Soup Container
12 oz (14 oz rim full)
4.4" dia., 2.3" tall
1 dz.



EC-24-1-CL
Soup Container
16 oz (18 oz rim-full)
4.4" dia., 2.9" tall
1 dz.



EC-26-1-CL
Soup Container
32 oz. (41 oz. rim-full),
6.5" dia., 3.25" tall
2 dz.

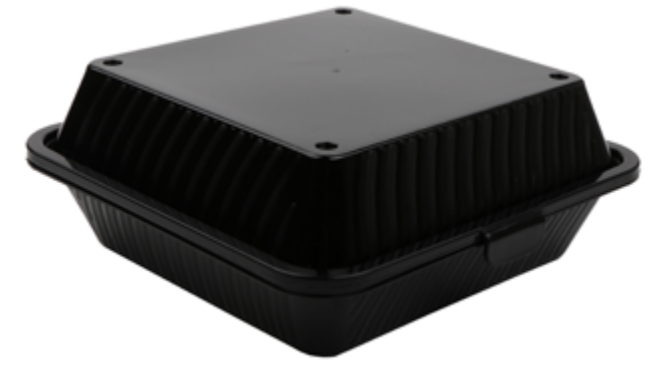
Eco-Takeouts Luxury Black Edition

The only reusable to-go container program with an upmarket classic black look, made even better by its sustainability halo.

This five-item focused collection accommodates all popular menu items and features the same durability, cost and waste savings you love.



EC-09-1-BK
Three-compartment reusable to-go container
9" L X 3.5" H
1 dz



EC-10-1-BK
Single-compartment reusable to-go container
9" L x 3.5" H
1 dz



EC-11-1-BK
Half-size reusable to-go container
9" L x 6.5" W x 2.75" H
1 dz



EC-08-1-BK
Single-entrée to-go container
5" L x 3.25" H
2 dz



EC-23-1-BK
Soup/side dish to-go container
12 oz, 4.4" dia., 2.3" H
1 dz

A Bowl Lot of Love

From healthy to indulgent, good things come in bowls.

Eco-Takeouts is the only complete line of reusable bowls ready to help you capture those good vibes, made even better by reducing so much waste.

Hot or cold, sweet or savory, breakfast or midnight snack: If it's served in a bowl, you'll find a reusable solution for it here.

Plus, enjoy these brilliant design elements:

- Thick base protects hands from hot food
- Minimal replacement parts to manage
- Stacking and nesting capabilities
- Microwavable in 1-minute pulses



NEW! 32 oz Bowl

This 32 oz entrée bowl opens doors across the world. Explore Asia with pho, ramen, biryani, poke and more. Take a trip to Italy with saucy fresh pastas. Or visit the past with ancient grain bowls of quinoa, barley, freekeh or farro.

With a leak-proof lid, your guests never have to worry about spills.



EC-26-1-JA
Soup Container
32 oz. (41 oz. rim-full),
6.5" dia., 3.25" tall
2 dz.



EC-07-1-JA
Soup Container
12 oz. (12 oz. rim-full),
4.25" dia., 2.75" tall
355 ml (355 ml), 10.8 cm
1 dz.



EC-13-1-JA
Soup Container
16 oz. (16 oz. rim-full),
4.25" dia., 3.75" tall
473 ml (473 ml), 10.8 cm
1 dz.



EC-07-LID-JA
Replacement Lid for
EC-07-1 and EC-13-1
1 dz.



EC-07-HAN-JA
Replacement Handle for
EC-07-1 and EC-13-1
1 dz.



EC-26-1-CL
Soup Container
32 oz. (41 oz. rim-full),
6.5" dia., 3.25" tall
2 dz.



EC-07-1-CL
Soup Container
12 oz. (12 oz. rim-full),
4.25" dia., 2.75" tall
355 ml (355 ml), 10.8 cm
1 dz.



EC-13-1-CL
Soup Container
16 oz. (16 oz. rim-full),
4.25" dia., 3.75" tall
473 ml (473 ml), 10.8 cm
1 dz.



EC-07-LID-CL
Replacement Lid for
EC-07-1 and EC-13-1
1 dz.



EC-07-HAN-CL
Replacement Handle for
EC-07-1 and EC-13-1
1 dz.



EC-23-1-JA
Soup Container
12 oz (14 oz rim full)
4.4" dia., 2.3" tall
1 dz.



EC-24-1-JA
Soup Container
16 oz (18 oz rim-full)
4.4" dia., 2.9" tall
1 dz.



EC-23-1-CL
Soup Container
12 oz (14 oz rim full)
4.4" dia., 2.3" tall
1 dz.



EC-24-1-CL
Soup Container
16 oz (18 oz rim-full)
4.4" dia., 2.9" tall
1 dz.



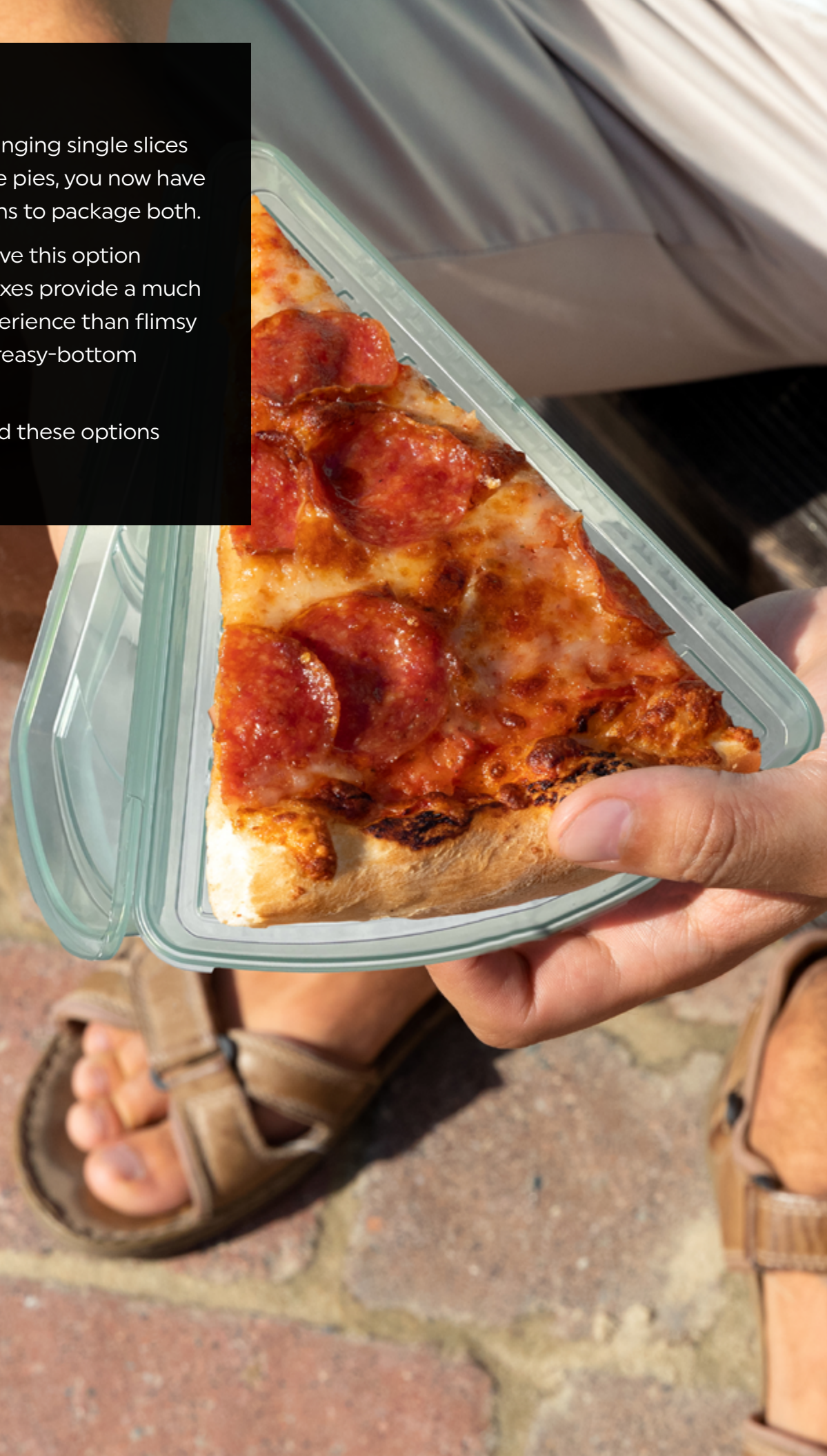
EC-23-1-BK
Soup Container
12 oz (14 oz rim full)
4.4" dia., 2.3" tall
1 dz.

Pizza Party

Whether you're slinging single slices or prepping whole pies, you now have sustainable options to package both.

Your guests will love this option because these boxes provide a much better eating experience than flimsy paper plates or greasy-bottom cardboard.

And you won't find these options anywhere else.



Whole Pie or by the Slice

Newest to the lineup is the reusable box for a whole 10"-12" pizza. You get the cost and waste savings benefits of a reusable option, plus these thoughtful design elements:

- Tops and bottoms are the same so you can easily match parts
- Corrugated bottom for crisp crusts
- Space-saving stackability

The one-of-a-kind pizza slice box also features a corrugated base for extra crispness and provides a top-notch eating experience.

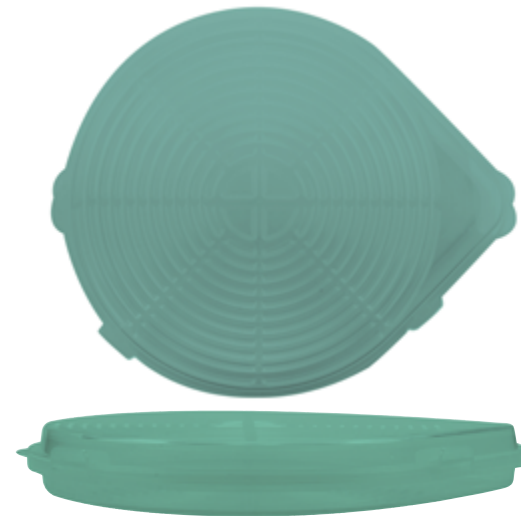
- Fits standard slice from a 16" pizza
- Nests when open, stacks when closed
- Hinged lid for quick packing, saving time over other methods like wrapping in foil or using clumsy paper clamshells
- Superior heat retention over disposables



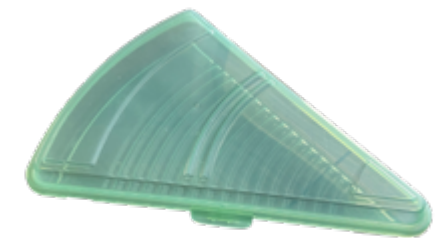
EC-27-1-CL
Whole 10"-12" Pizza
14.2" L x 14" W x 2.2" H
2 dz
*Available Oct 2021



EC-25-1-CL
Single Slice Pizza
10.5" L x 8.25" W x 0.75" H
2 dz



EC-27-1-JA
Whole 10"-12" Pizza
14.2" L x 14" W x 2.2" H
2 dz
*Available Oct 2021



EC-25-1-JA
Single Slice Pizza
10.5" L x 8.25" W x 0.75" H
2 dz

Eco-Takeouts Hot & Cold Cup

The first beverage option created specifically for the Eco-Takeouts program not only offers a better experience, it improves safety, too:

- Sturdy lid seal
- No clumsy sleeves needed for hot drinks
- Safely microwavable in :30 pulses
- Customizable



Reusable Hot & Cold Cup

Benefits

- Significant reduction in spending and waste when compared to disposable options, helping you save money and meet sustainability goals
- The operational ease of serving either a hot or cold drink in the same cup
- An equal or better guest experience compared to disposables



EC-116-1-JA
Double Walled Cup & Lid
16 oz
3.5" dia., 5.3" H
With Lid: 3.9" dia., 6.1" H
2 dz

Features

- Commercial dishwasher safe
- Microwavable in :30 second pulses
- Can withstand 32°F to 200°F
- Double-walled for excellent temperature retention, hot or cold
- Ergonomic drinking spout with large aperture for straws and foamy drinks
- Lid has leak-proof seal
- Keep cups upright when filled with beverages, the drinking spout is uncovered
- Replacement lids and gaskets available
- Recyclable #5 plastic
- BPA-free
- Customizable



Eco Drop Bin

A simple, comprehensive solution for easily returning used Eco-Takeouts containers.

The Eco Drop Bin features a sleek design made from highly durable powder-coated steel and is fully customizable.

Eco Drop Bin

- Sleek design with option to custom decorate
- A simple, comprehensive drop-off solution
- Ideal capacity of minimum twenty-five (25) 9" x 9" containers per Eco Drop Bin
- Capacity size encourages frequent pickup for optimal sanitation and a light load for staff
- Made from durable powder-coated steel
- Can earn free Eco Drop Bins when purchasing in quantity with Eco-Takeouts containers
- Sealed along the bottom to deter pests



Keys & Replacement Keys

Each Eco Drop Bin comes with 2 keys.

Replacement keys can be ordered in sets of 2 and received within 3 days on average.

BIN-KEY
Replacement Key
2 ea



BIN-1-BK
Eco Drop Bin
27" L x 29" W x 40" H
1 ea

Accompanying Components

The Eco Drop Bin is designed for use with a square 40 gallon waste container and liner (round containers will not fit).

These containers and their liners are standard sizes and available through most dealers.



Square Waste Container
(Rounds will not fit)
23.5" L x 28.75" H
40 gallons



**Complete Your System With Transport Tools
From Our Sister Company Winco!**

Contact G.E.T. for Assistance



Double Transport Case
IFT-2 Double Cabinet Insulated Food Pan Transporter w/ Built-in Dolly



Single Transport Case
IFT-1 Single Insulated Food Pan Carrier



Transport Dolly
IFT-1D Dolly w/ Casters & Cargo Strap



Insulated Delivery Bag
BGDV-12 12" x 12" x 12"

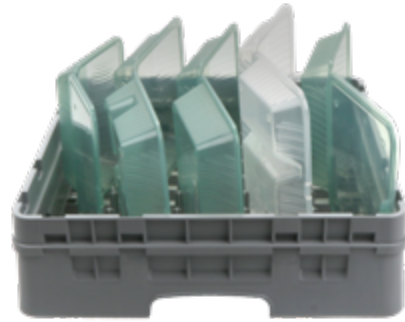


Insulated Delivery Bag
BGDV-22 22" x 22" x 12"

Tips & Tricks for Care & Handling



Dishwasher safe for high or low temperature machines



Angle opened containers at 30° in a peg dish rack for thorough sanitation



Always use a bleach-free detergent



Use a special rinse aid designed for plastic



G.E.T. recommends Ecolab's Rinse Dry™

This Rinse Aid is specially designed to sheet rinse water off faster from any plastic to speed drying and is very effective with Eco Takeouts™.



If a drying agent is not an option, plan time for them to dry before stacking as plastic naturally dries more slowly than porcelain and glass

Request a Sample: <https://resources.get-melamine.com/get-sample-request>



**Designed
To Serve**

G.E.T. Enterprises
7401 Security Way, Suite 200
Jersey Village, Texas 77040

Telephone: (800) 727-4500
Email: info@get-melamine.com
Web: www.get-melamine.com